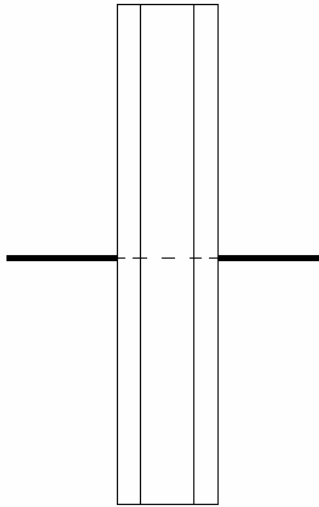
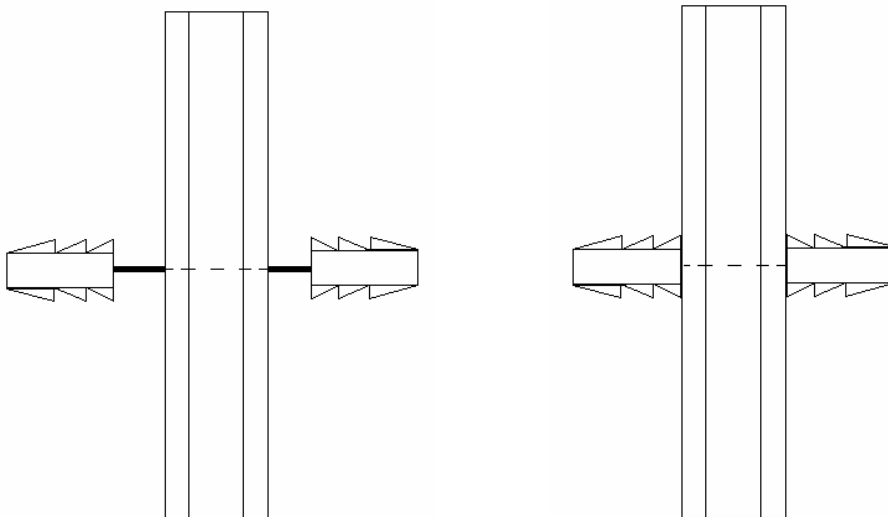


## Intruction for the bars assebmly

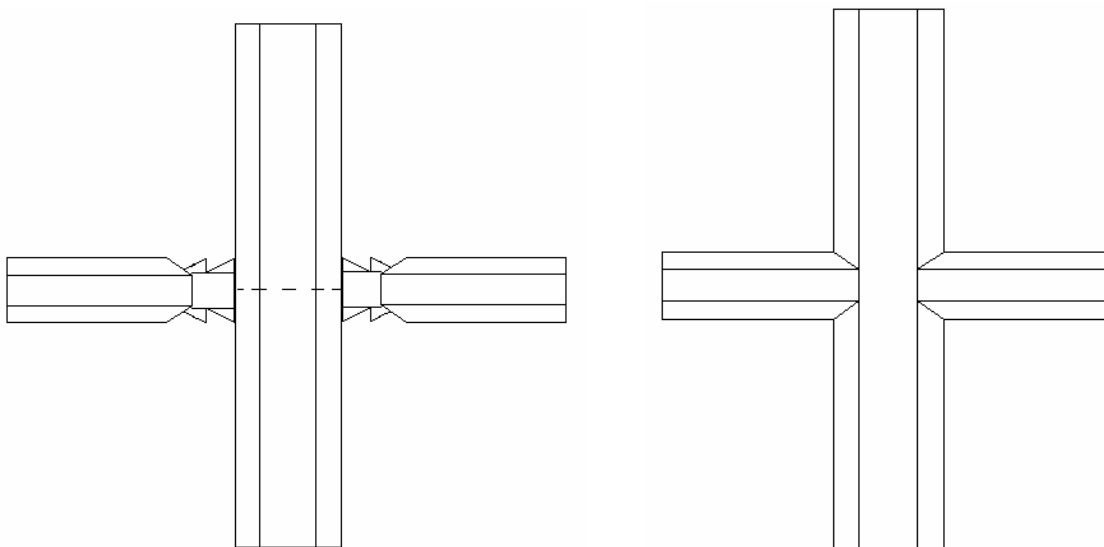
1. Shift the Bolt through the vertical bar.



2. Put the connectors onto bolt and press them till the resistance apper (a rubber hammer can be used).

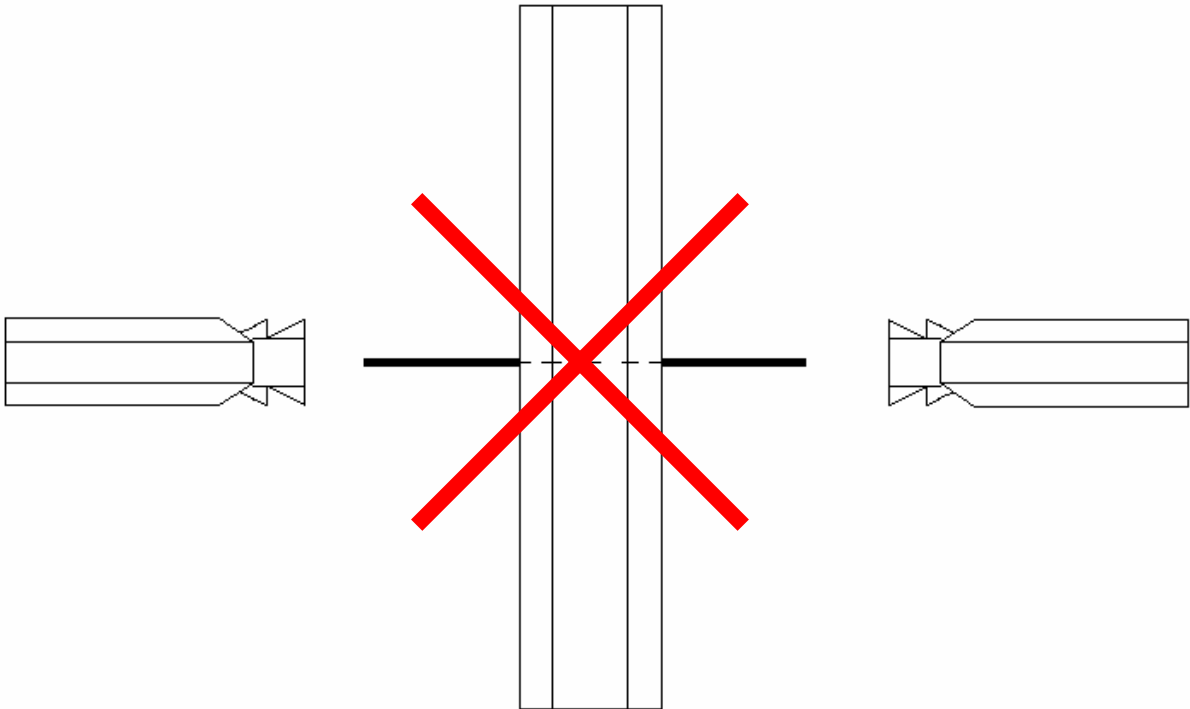


3. Put the horyontal bars onto the connectors.



**Caution!**

Do not put the connectors onto the horyontal bars before placing them one the bolt!



This way of assembly can causa instability.